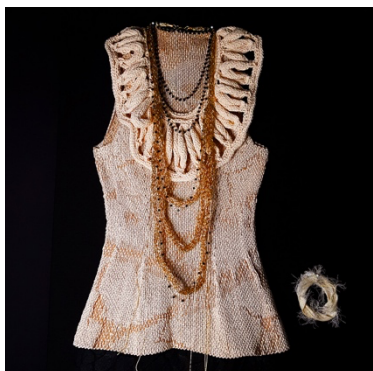


KNITTED NECKLACE



A knitted stitch to simulate a precious golden chain, worked with intarsia and gore technique.

We combined it with a chain of black stones to show how a knitted necklace can be a wonderful accessory. It can also be used instead of a belt.

Accessories are important to give uniqueness to an outfit and more and more often exclusive solutions are sought for their realization.

Machine: STOLL CMS520 C + Ki Multi Gauge

Gauge: 1,5.2

Techniques: Intarsia, Gore-technique.

Yarn	Count	Composition	Colour	Yarn Mill
STEV 360080 CS	Nm 2	10% PM 90%VI	White Gold 2222	Lurex